

**ARKCEIL**

**SOFFIT**

**MODERN ENGINEERED  
CEILING SOLUTIONS**

**Clean, Innovative Design.**

**10**

**YEARS  
Warranty**

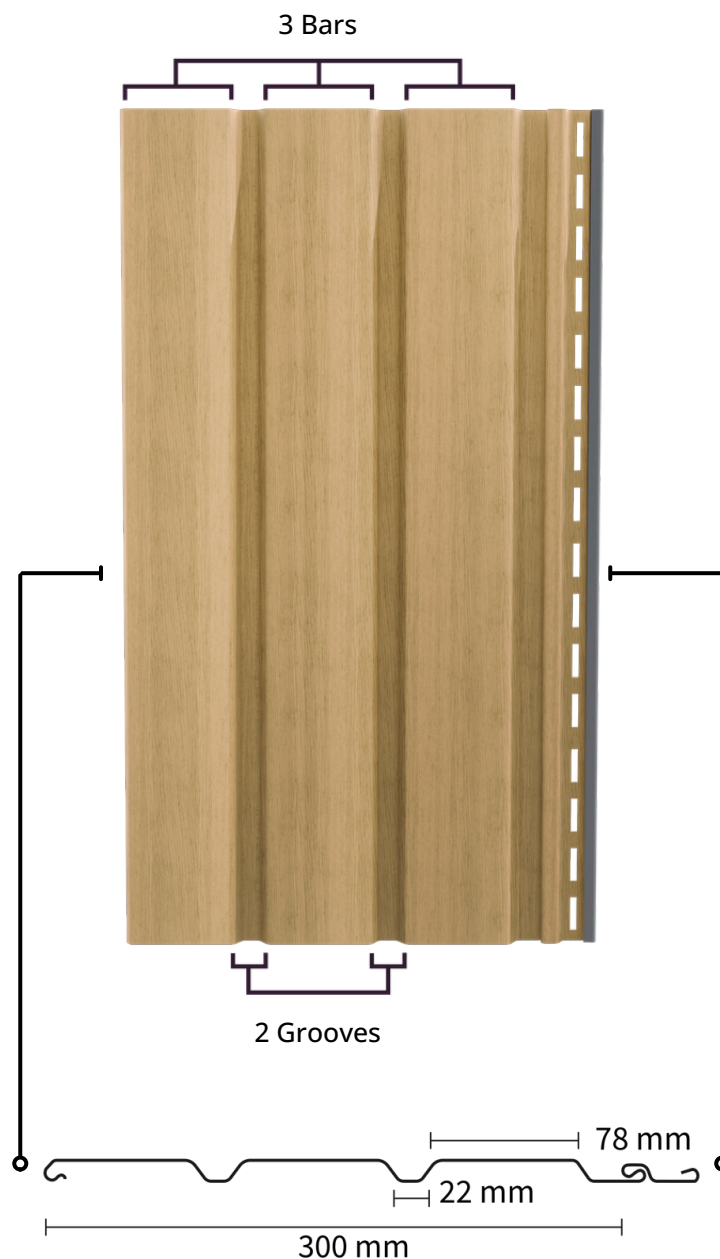
# ABOUT ARKCEIL

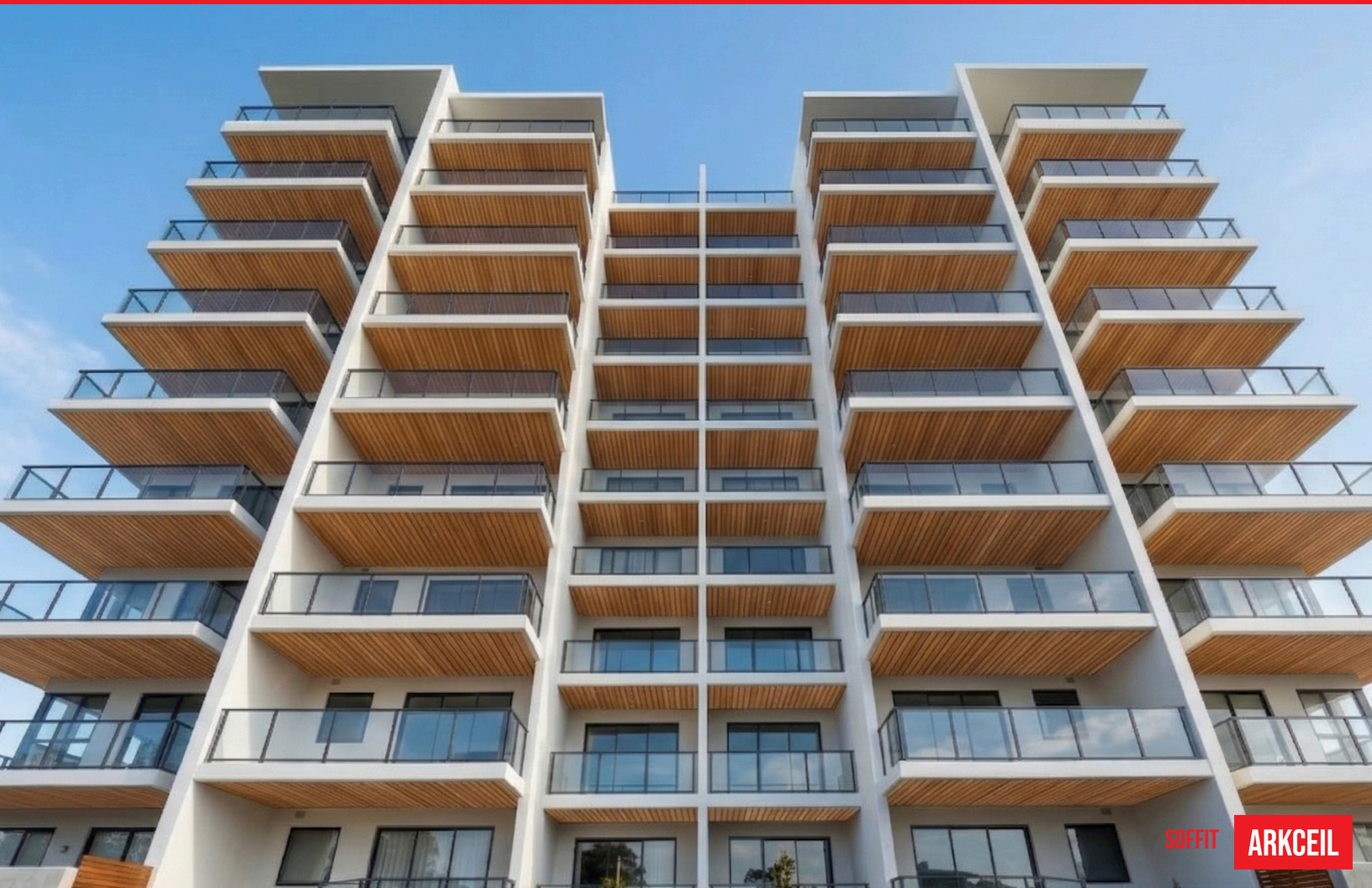
ArkCeil provides modern engineered ceiling solutions for architects, contractors, and designers seeking innovation and practicality. Our advanced polymer technology captures wood's natural beauty through high-precision heat-transfer finishes, without the upkeep of traditional materials. The fully integrated system-panels, trims, accessories-streamlines installation, cuts site complexity, and delivers consistent results for residential and commercial projects.

# PROFILE DESIGN

**ArkCeil Soffit** features a three-part architectural profile with two integrated grooves that create subtle shadow lines. The balanced design delivers a clean and modern ceiling appearance while maintaining visual depth. Suitable for residential and commercial soffit and ceiling applications.

Best suited for standard ceiling and soffit zones where a clean, minimal appearance is required. Ideal for balconies, passages, verandas, entrance canopies, and covered walkways. Works well in areas needing subtle detailing without visual heaviness.







# BASE COLLECTION



**Birch**



**Golden Maple**



**Golden Oak**



**Walnut**



**Mahogany**



**Oak Wood Ochre**



**Royal Nut**



**Ashwood Grey**



**Super White**

**Our nine premium** wood-grain finishes capture the authentic beauty of natural timber, engineered for architectural precision and lasting performance. Each shade replicates genuine wood characteristics through advanced heat-transfer technology, delivering realistic grain patterns and surface textures that maintain their appearance across years of exposure.

From the warmth of Golden Oak and rich depth of Walnut to the contemporary neutrality of Ashwood Grey and crisp clarity of Super White, these finishes offer architects and designers versatile options for residential, commercial, and hospitality projects. Oak Wood Ochre, Mahogany, Royal Nut, Birch, and Golden Maple complete a sophisticated palette that harmonizes with diverse interior styles while ensuring seamless coordination across soffit, baffle, and accessory systems.

# FEATHER TOUCH COLLECTION

**Experience** the next level of surface sophistication with Feather Touch Shades, where advanced polymer technology creates an ultra-soft, velvety matte finish that feels more natural.

Classic Walnut, Amber Oak, Nutmeg Maple, and Vintage Teak deliver whisper-soft tactility with zero light reflection perfect for luxury interiors where refined texture elevates every surface. These premium finishes offer architects and designers authentic wood character with engineered precision, ensuring a flawless, maintenance-free appearance that ages gracefully in high-end residential and hospitality applications.



**Classic Walnut**



**Nutmeg Maple**



**Amber Oak**

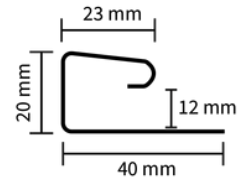
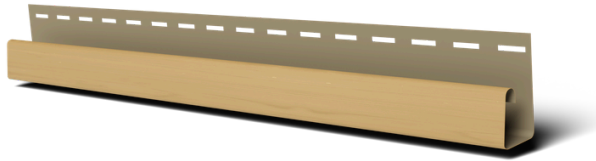


**Vintage Teak**

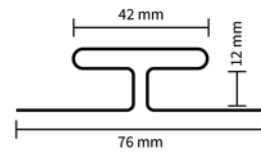
# TRIM ACCESSORIES

FINISH INSTALLATIONS SEAMLESSLY WITH OUR **UNIVERSAL TRIM SYSTEM**

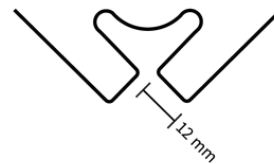
## J-Trim



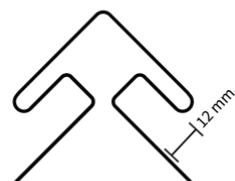
## T-Trim



## Inside Corner



## Outside Corner



# IDEA APPLICATION & FEATURES

The ArkCeil Soffit is built around a philosophy of restraint and intention. Its balanced 3-bar, 2-groove profile does not seek to dominate a space instead, it enhances it. The subtle shadow lines created by this profile add just enough depth and rhythm to a ceiling surface to make it feel considered and complete, without drawing attention away from the architecture, furnishings, or people within the space.[user-provided]

This is the profile that works quietly in the background, doing exactly what great design should making everything around it look better. In open-plan living areas, it introduces a gentle visual texture that softens the expanse of a flat ceiling. In office environments, it maintains a professional, distraction-free atmosphere. In hospitality spaces like hotel rooms and restaurant dining areas, it creates a sense of calm that guests feel without necessarily noticing.[user-provided]

## IDEAL APPLICATIONS



**HOTEL LOBBIES**



**BALCONY**



**OFFICE SPACE**



**BEDROOMS**



**LIVING ROOMS**



**DINNING AREA**

## KEY FEATURES



**LEAD  
FREE**



**EASY TO  
INSTALL**



**WATERPROOF**



**REAL WOOD  
FEEL**



**ANTI  
BACTERIAL**



**10 YEARS  
WARRENTY**

# INSTALLATION SYSTEM

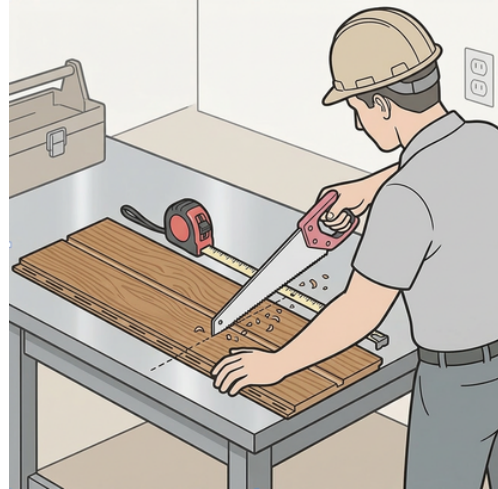
## Step 1 Fix J Trim

Screw J Trim on the ceiling to frame the installation area.



## Step 2 Cut Panels

Measure & cut soffit panels to size.



## Step 3 Install Panels

Start from one end → Insert into J Trim → Screw onto furring (opposite orientation) → Interlock next panel.



## Step 4 Fix J Trim

Continue till full coverage. Done!



# PROPERTIES OF SOFFIT SYSTEM

ArkCeil Soffit panels are valued for their robust practical performance. Designed to withstand varied environmental conditions humidity, moisture, temperature changes the panels maintain their finish and structural integrity over time. They are resistant to biological corrosion caused by algae, fungi, and bacteria, making them well-suited for semi-outdoor and covered spaces. Unlike natural wood, ArkCeil Soffit panels require no periodic sealing, painting, or treatment. They are also lead-free and safe for interior use, including residential spaces where air quality and material safety matter.

The lightweight construction of ArkCeil panels simplifies self-assembly and reduces load on the building structure. The integrated universal trim system J-Trim, T-Trim, Inside Corner, and Outside Corner ensures that all edges and junctions are finished cleanly, without the need for custom fabrication on site.

Finishing a ceiling or soffit with ArkCeil also allows for the concealment of wiring and structural components, creating a clean visual surface. The system is compatible with standard lighting installations, enabling architects and homeowners to integrate ceiling lighting for ambiance, security, or accent purposes.



# ARKCEIL

**ARK INNOVATIONS**

**+91 97264 20095 | [info@arkceil.com](mailto:info@arkceil.com)**

Lajai, Morbi-363641, Gujarat, India

**[www.arkceil.com](http://www.arkceil.com)**

